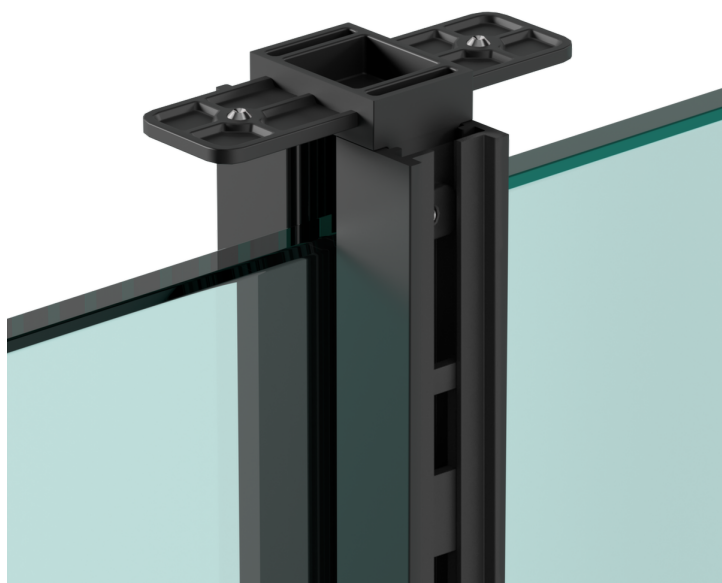




GRiD System

Maximum flexibility thanks to the equipped walls system





GRiD System

GRiD System, the new Terno Scorrevoli Wall System, was created with a precise objective in mind: to redefine the domestic space.

GRiD System is an extremely practical system and you can guess it right from the design stages. Based on a real program, it offers a complete constructive solution, capable of transforming a semi-finished product into a structural construction base that has all the necessary constructive characteristics and the right compromise between aesthetics and technique.

[Read more](#)

Modern needs require innovative solutions that can adapt to increasingly flexible and frequently changing spaces. Redefining space therefore means not only rationalizing a room, but rethinking it with a view to change. The house is therefore a place that must be able to change accordingly with people's needs. The walls, movable and modular, were created to adapt to the needs of a modern lifestyle that leaves ample room for creativity and the possibility of dividing each room as you like. Designing your home space has become easier because as of today, it is also possible to do it post-realization.

An eco-sustainable solution

GRiD is an open system that stems from current needs such as: flexibility, brightness and sustainability. Made entirely of aluminum, it is combined with a paneling in glass or wood according to the design needs. A great advantage that combines aesthetics and practicality with a nod to the environment. The GRiD System is at its best when combined with the glass paneling where the larger and brighter spaces make the room more modern, allowing also for a partial energy saving thanks to the natural light that can be exploited for most of the day.

