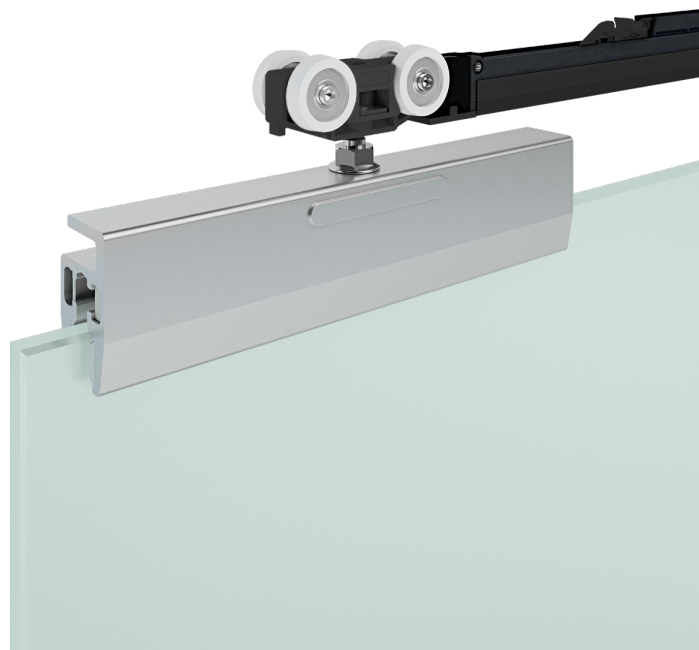




Pronto

Single body clamps ready for assembling, without holes in the glass



→|← 8 ÷ 12,7 mm

↔ Min 600 mm

🛒 Max 80 kg

↑↓ 10 mm

FLUID Fluid dampers

🚪 Guida a scatto

🚪 Guida manuale



Pronto

Pronto is a sliding system very easy to be mounted: the clamps are completely pre-assembled and ready to be fixed on glass doors, and do not require further processing.

The system is compatible with monolithic or stratified glass, with thicknesses from 8-8,7 mm (5/16"), 10-10,7 mm (3/8") and 12-12,7 mm (1/2").

Pronto integrates the new sliding trolleys, with Fluid technology: the movement turns out to be extremely soft, in opening and closing, for a constantly improved user experience.

