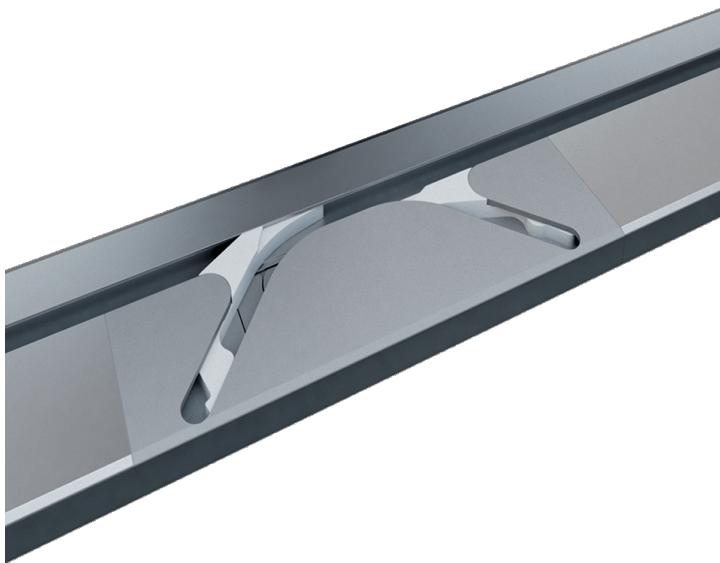






Switch




Sliding system for “in-line” cabinet doors



 18 ÷ 22 mm

 Max 2000 mm

 Max 20 kg



Switch



Switch is the innovative solution by Terno Scorrevoli designed to espouse the visual elegance typical of “in-line” doors (internal sliding) along with high performance requirements and significantly reduced costs.

When the cabinet is closed, the “in light” flush closure of doors, will allow a continuous and compact surface with no overlap between one door to the other. Switch it allows then to realize furnitures for offices, small cabinets for living rooms, kitchens and bathrooms, characterized by a strong aesthetic impact.

Switch is a patented system for “in-line” cabinet doors, with hidden retractable opening, extremely flexible, indeed the system is modular and can be cut to size. Furthermore the system is up and down reversible in order to allow the use of simmetric cabinet doors.

A simple Switch

The functionality of Switch system is very simple and it reminds to typical train railroad switch: with a single gesture, cabinet door will be shifting and then it will slide internally to the cabinet, thanks to the simple rotation of small flap which leads it during the motion.

Initial position

The cabinets doors are perfectly aligned, shaping a continuous surface.

Final position

A door is moving along the track, internally to the cabinet, thanks to the switch turnout movement leaded by the small flap.

No extra processing required

Switch is a complete system able to fit the already existing cabinet cases and doors, avoiding possible extra costs required to create new dedicated structures. To install Switch system, indeed, it would be necessary only a simple milling in the upper and lower side, without any false bottom or rise board to conceal the mechanism.

